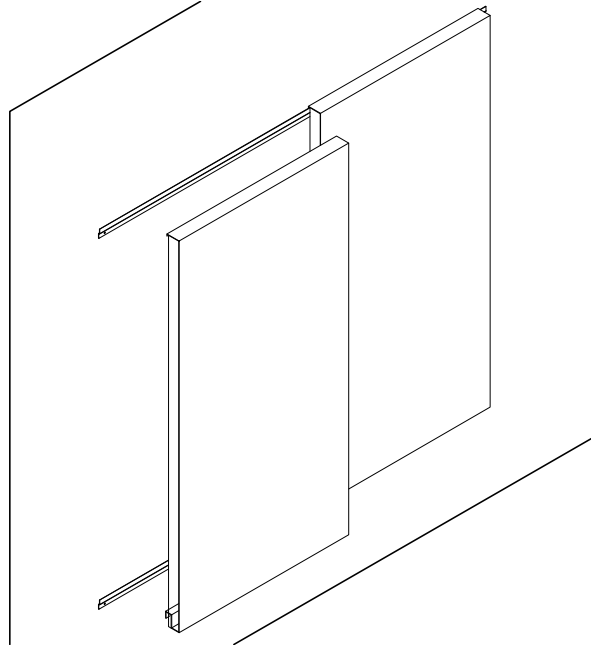


# accent<sup>®</sup>

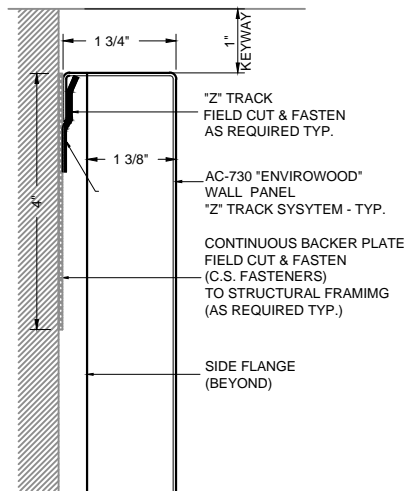
## CEILINGS AND WALLS

A DIVISION OF ADAMS CAMPBELL COMPANY  
ISO 9001: 2000 CERTIFIED

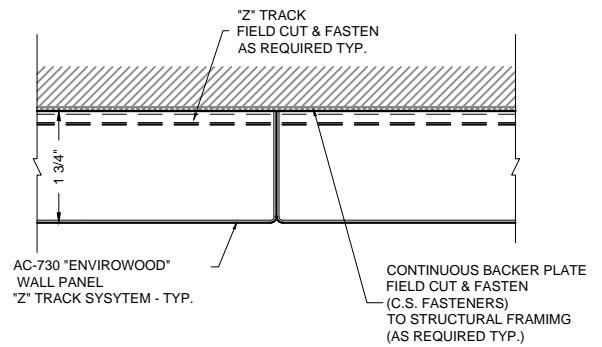
### "ENVIROWOOD" METAL ZEE TRACK MOUNTED WALL PANEL SYSTEM (AC-730)



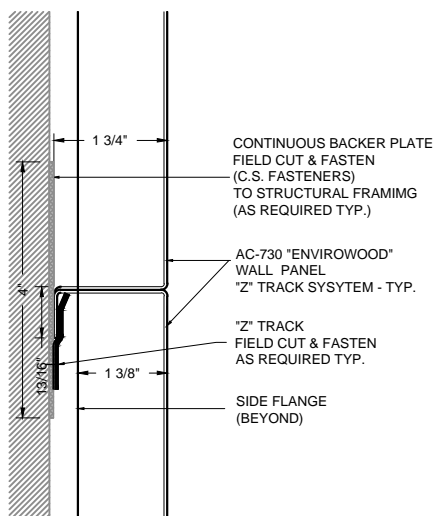
- Description:** Zee track mounted wall panels. Factory formed metal panels with formed edges all four sides (1.00", 2.00", 3.00" and 4.00" thick available), Perforated or Non-Perforated. Panels are mounted to concealed zee track mounted to wall or ridged backer. Perimeter trim available for field cut conditions.
- Application:** Wall panel provided for interior installation. Curved application available.
- Material:** Aluminum / Vinyl Veneer
- Finishes:** Standard simulated wood grain veneers include Maple, Oak and Cherry Reference Options tab for additional finishes available.
- Standard Sizes:** Maximum size 4'-0" x 10'-0"
- Fire Rating:** Class A
- Acoustics:** NRC rating of .70 to 1.00 can be achieved by selecting correct perforation pattern and acoustical backing.
- Perforation:** Reference Options Tab for Patterns, consult manufacturer for acoustical values
- Recycled content:** Aluminum alloys 32% (5052) - 66% (3105)



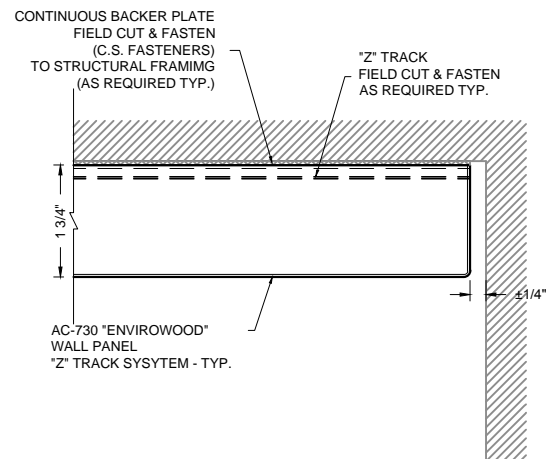
**1** PERIMETER DETAIL (TOP)  
AC-730-FT1



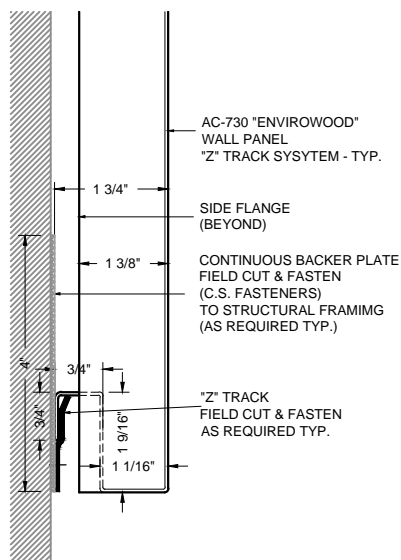
**2** PANEL JOINT DETAIL  
AC-730-FS1



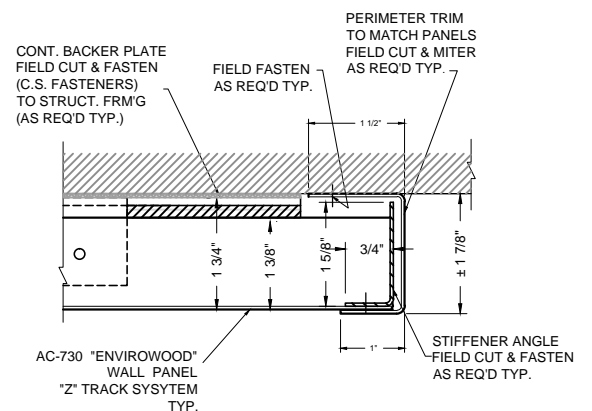
**3** PANEL JOINT DETAIL  
AC-730-FM1



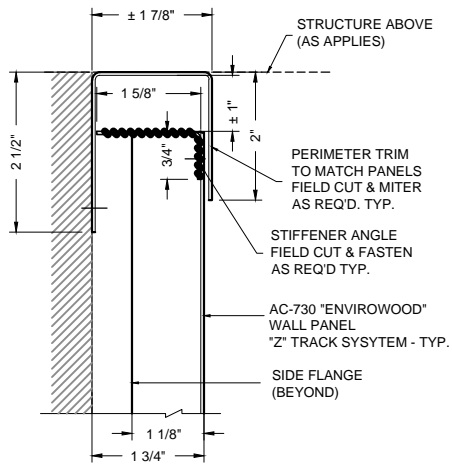
**4** PERIMETER DETAIL (EDGE)  
AC-730-FE1



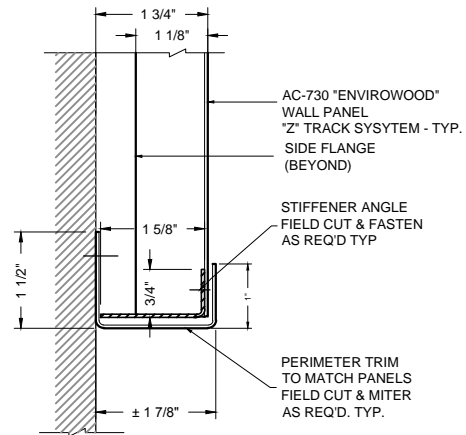
**5** PERIMETER DETAIL (BASE)  
AC-730-FB1



**6** PERIMETER DETAIL  
AC-730-FCE1



**1 PERIMETER DETAIL (TOP)**  
AC-730-FCT1



**2 PERIMETER DETAIL (BASE)**  
AC-730-FCB1