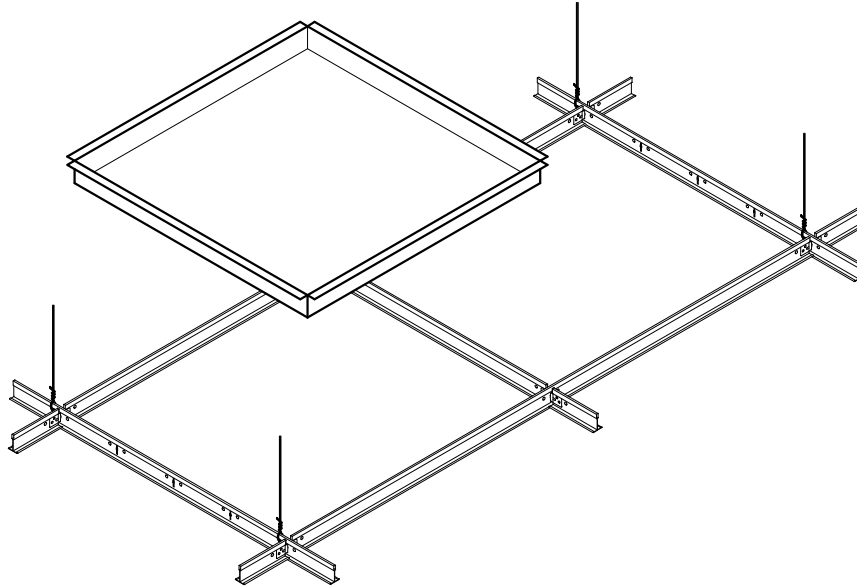


accent

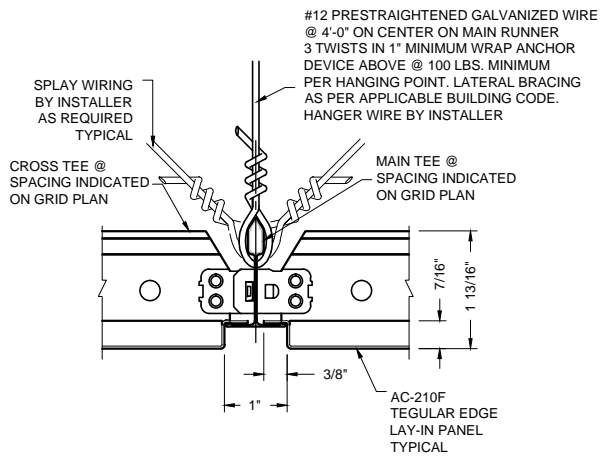
CEILING AND WALLS

A DIVISION OF ADAMS CAMPBELL COMPANY
ISO 9001: 2000 CERTIFIED

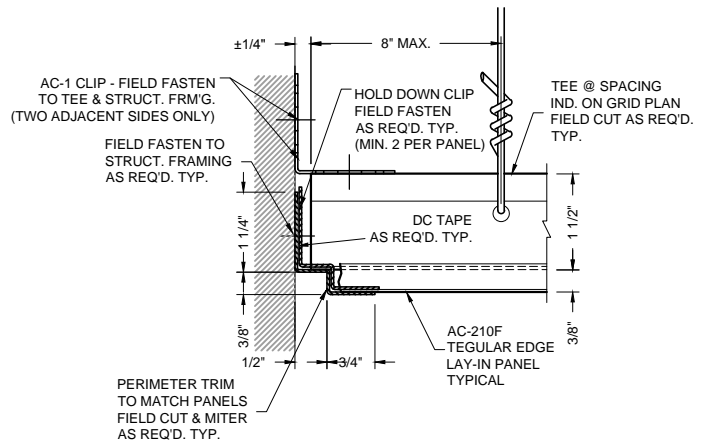
LAY-IN FLAT, TEGULAR EDGED METAL CEILING SYSTEM (AC-210)



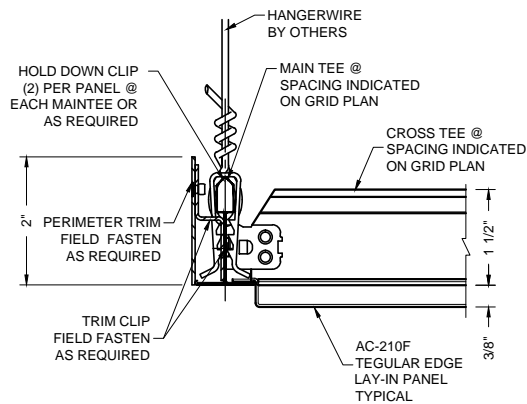
- Description:** Economical tegular edge lay-in ceiling system, Perforated or Non-Perforated. Exposed recessed tee grid system. Face of panel drops below face of grid. Available for 9/16" wide and 15/16" wide grid. When 9/16" fineline grid is used, panel face will flush out with face of fineline grid. Efficient and quick installation, Panel drops into ceiling grid.
- Application:** Ceiling provided for interior installation. (vaulted or radial design available)
- Material:** Panel available in aluminum, steel or stainless steel
- Finishes:** Painted powder coat colors, brushed, bright, anodized, vinyl or custom finishes
Reference Options tab for available finishes.
- Standard Sizes:** 24" x 24", 24" x 48", 30" x 30" and 36" x 36" Custom sized panels also available.
- Fire Rating:** Class A
- Acoustics:** NRC rating of .70 to 1.00 can be achieved by selecting correct perforation pattern and acoustical backing.
- Perforation:** Reference Options Tab for Patterns, consult manufacturer for acoustical values
- Recycled content:** Aluminum alloys - 32% (5052) - 66% (3105)



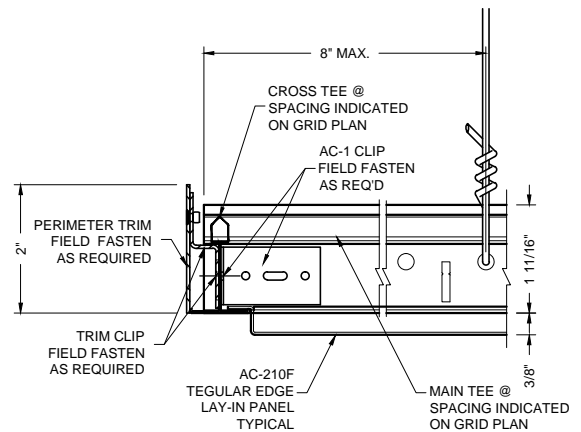
1 PANEL JOINT DETAIL
AC-210-PJ1



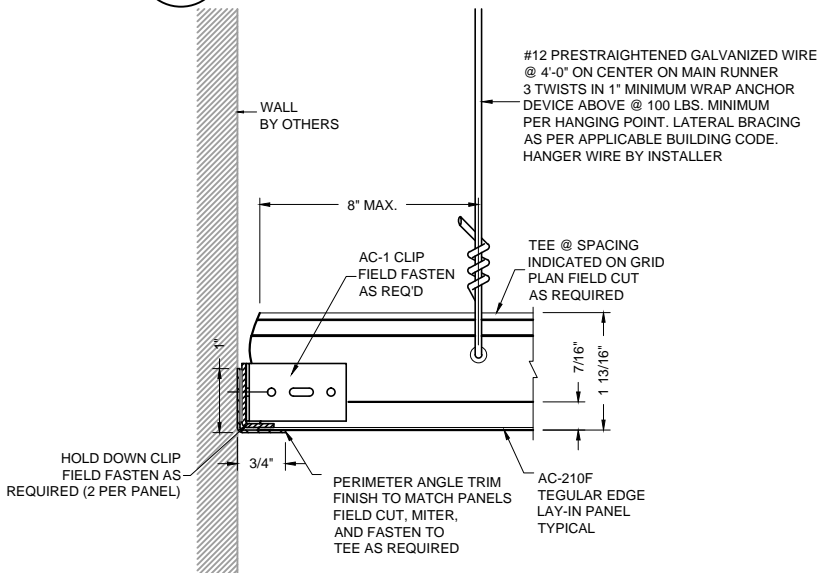
2 PERIMETER DETAIL
AC-210-PFC3



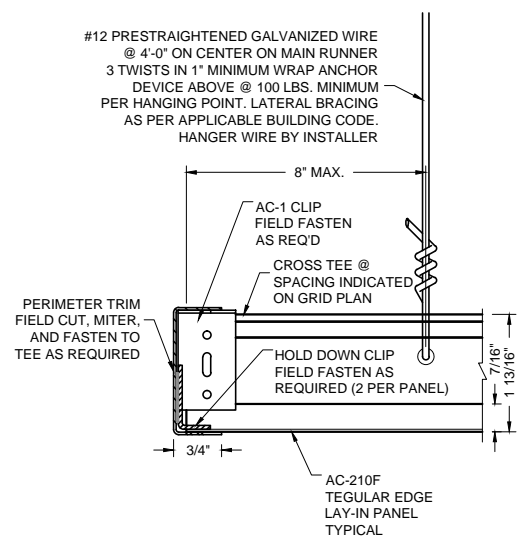
3 PERIMETER DETAIL
AC-210-P2



4 PERIMETER DETAIL
AC-210-P3



5 PERIMETER DETAIL
AC-210-PFC1



6 PERIMETER DETAIL
AC-210-PFC2